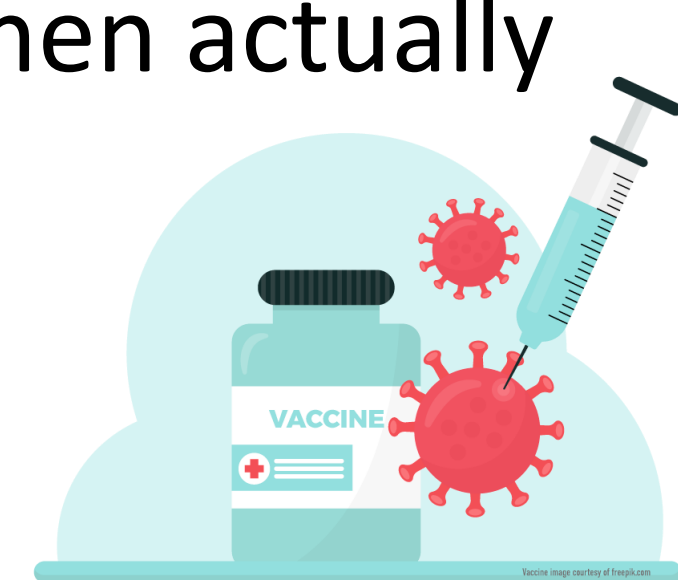




## INTRODUCTION

- COVID-19 was classified as a pandemic on March 11, 2020.
- In Canada, as of August 28, 2020, there have been 126,848 cases and 9,102 deaths related to COVID-19.
- Currently, there are several COVID-19 vaccine candidates being tested in phases 2 and 3 trials.
- The success of vaccination to slow the pandemic is contingent upon people being willing and then actually getting the vaccine.



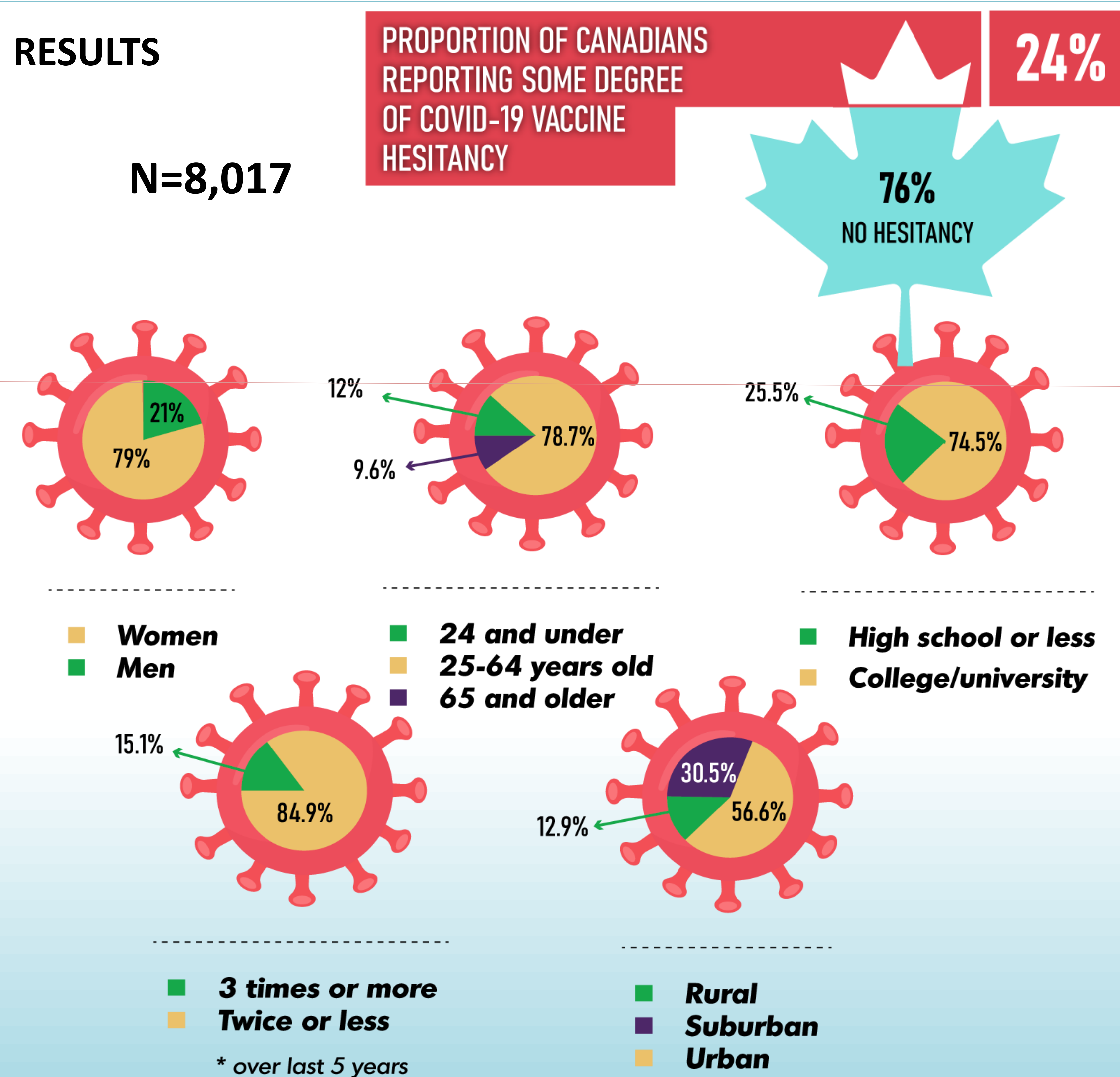
## OBJECTIVE

Present cross-sectional study explored COVID-19 vaccination hesitancy in the Canadian population.

## METHODS

- We analyzed data from the Canadian respondents of the international COVID-19-related Attitudes, concerns, Responses and impacts in relation to public health policies (iCARE) global study (<https://mbmc-cmcm.ca/covid19/>).
- Participants were recruited using snowball sampling, and the online survey (LimeSurvey©) was distributed through all collaborators of the study.
- Proximal contacts, multiple international channels were used to disseminate the survey, including professional networks, associations and societies; community organisations; community groups; and via social media (e.g., Twitter, Facebook, Instagram).
- Data were collected between March 27 and July 26, 2020 (waves 1, 2 and 3).
- Descriptive statistical analyses were conducted to explore vaccine hesitancy differences based on socio-demographic and history of flu vaccination.

## RESULTS



## CONCLUSION

We observed concerning levels of COVID-19 vaccine hesitancy in the Canadian population, with some sections of the population being more hesitant than others: women, 25-64 years old, higher educational level, history of low compliance for flu vaccine and living in urban areas.

Development and implementation of tailored strategies to address vaccine hesitancy should be set as a priority by policymakers and public health authorities in the fight against COVID-19.

Email: [covid19study@mbmc-cmcm.ca](mailto:covid19study@mbmc-cmcm.ca)

**PARTICIPATE IN OUR STUDY: [mbmc-cmcm.ca/covid19](https://mbmc-cmcm.ca/covid19)**



Centre intégré universitaire de santé et de services sociaux du Nord-de-l'Île-de-Montréal

Québec

**iCARE  
STUDY**

International assessment of COVID-19-related attitudes, concerns, responses and impacts in relation to public health policies